

Cambridgeshire Drug Intervention Programme (DIP) — **Previously named
Criminal Justice Interventions Programme (CJIP)**

Heroin and crack users are responsible for more than half of acquisitive crimes, such as burglary and car theft. All Drug (and alcohol) Action Teams, have been provided with DIP funding for the next two financial years

The overall aim of DIP is to target Class A adult drug users in Cambridgeshire to get them into treatment and out of crime, retaining clients in treatment and supporting them through and after treatment and sentence.

The POPOS programme has a wider brief and includes crime or ASB matters not necessarily related to drugs. POPOS has three main elements:

- Prevent and Deter
- Catch and Convict
- Rehabilitation and Re-settlement

However the cross over between the two programmes is immense, in Southern Division it is proposed that the POPOS coordinator will be placed within the multi-agency team, however this is still subject to confirmation.

Peterborough DAT have been tasked with establishing an intensive DIP Project, Cambridgeshire is a non- intensive area. Peterborough DIP encompasses drug testing on charge, there is no indication to date to roll this programme out to the rest of the county.

The Cambridgeshire programme will create 2 Criminal Justice Integrated Teams based Cambridge (covering Southern Division), Huntingdon and Wisbech (covering Central Division operating a satellite service in Wisbech). These teams will integrate current projects; Arrest Referral, DTTO and PORT, this provision will be enhanced by the recruitment of suitable DIP staff.

The additional (DAAT) funds will be spent on creating a single team that manages cases in a way that stops individuals “slipping through the net”. Additional funding will be spent on enhancing the number of dedicated prescribing sessions available in all three localities, recruiting additional workers within each locality team as follows, aftercare workers, resettlement workers, drug workers and CPNs

Funding to develop a Pre arrest Project (based upon project Nene in Peterborough) to cover the Southern Division of Cambridgeshire Constabulary, has been secured for a 12 month period. Investment has been made from the Constabulary and Health through the Joint Commissioning Group. This project will be run within the DIP Team in Cambridge. The Cambridgeshire multiagency teams will work within the same office and managed by an operational team leader.

In addition work is ongoing to enhance services available to clients by providing a countywide (including Peterborough) structured day care programme for all DIP clients to access. This will include some of the following elements

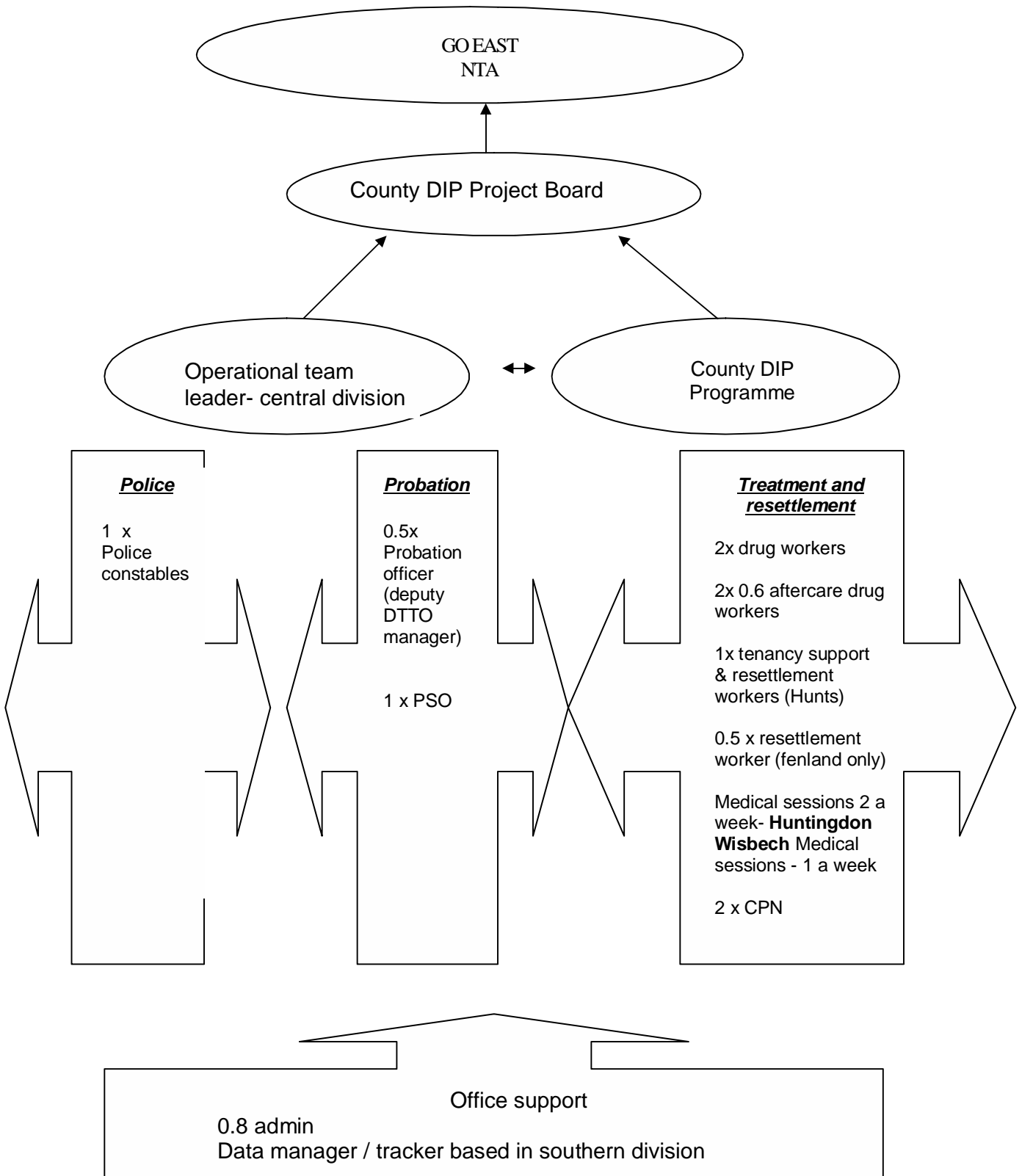
- Leisure opportunities
- Access to employment and training
- Complementary therapies
- Mentor / peer support
- Support to access volunteering opportunities
- Basic skills
- Family support
- Health promotion initiatives
- Probation accredited offender programmes

Match funding has been secured from Supporting People and Huntingdon Housing partnership to fund a tenancy and resettlement support worker in Huntingdon attached to 4-8 ring-fenced accommodation units for DIP clients. A mirror pilot is currently being explored with Cambridge city council and supporting people to provide 6-8 Units for clients.

Links have been made with Community Legal Services who have submitted a funding proposal to pilot an enhanced legal advice service within the teams across the county (including Peterborough).

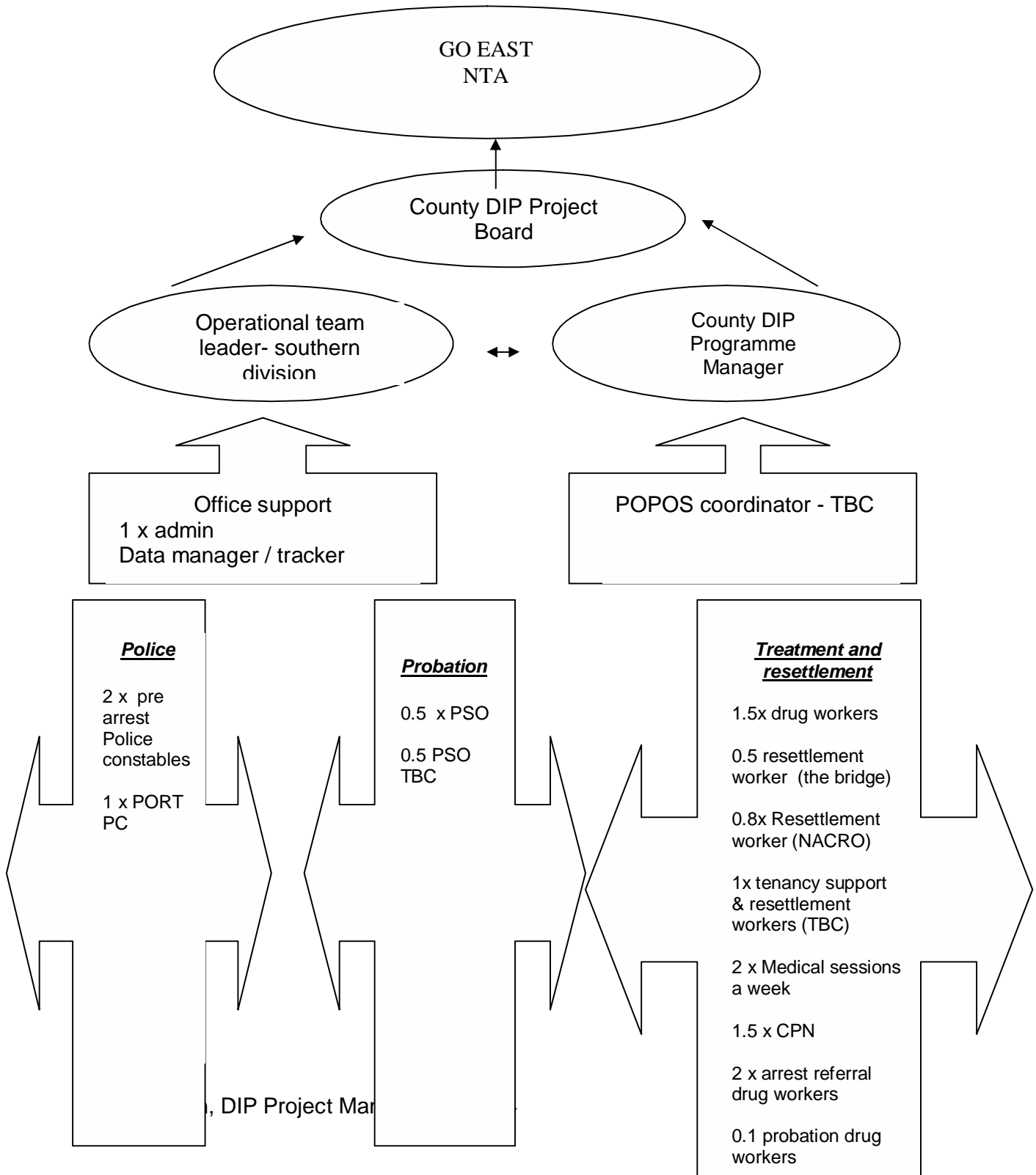
It is envisaged that these teams will “go live” in December having a single point of contact for the county.

The Central Division Team currently comprises of the following members of staff (no capacity to run a pre arrest project has been secured, additional treatment capacity has been developed which can support a pre arrest project). This team have been set a target of working with 100 clients.



The southern division encompasses the Pre arrest project, and currently comprises of the following members of staff

It is anticipated that the DIP team in Cambridge (covering the southern division) will be made up of approximately 14 members of staff (10.5 WTE), this team have been set a target of working with 150 clients per year



The following table outlines the KPIs that Cambridgeshire DIP is monitored upon.

	Target
The proportion of adults who are arrested for a trigger offence and undergo an assessment interview	70%
Of those who are assessed as needing treatment by the DIP worker, the proportion where a care plan is completed and are referred to a tier 2, 3 or 4 service	60%
Where a care plan is completed, the proportion who are case managed by the DIP	75%
The proportion of DIP clients who are either retained in treatment or achieve a planned completion of their care plan	80%
The proportion of prison referrals assessed as needing treatment who have agreed care plans and are case managed by the DIP	75%
Those clients identified by CDRPs as prolific or other priority offenders and who are appropriate to DIP	
DTTO commencements	65 (inc. 5 lower intensity DTTO)
DTTO completions	35% 'successful' completions

The DIP Programme in Cambridgeshire (excluding Peterborough) is being driven forward by a multi agency Board, members of which comprise

- Probation
- Cambridgeshire Constabulary
- Eastern region prison
- Mental Health Trust
- PCT
- DAAT

Further details can be obtained from Emma Pawson Cambridgeshire Drug Interventions Programme Manager on emma.pawson@cambridgeshire.gov.uk or 07979902572